



Lucitone Digital Print Denture Repair and Reline



Technical Support
800-243-1942
ext. 54212



[dsdigitaldentures@
dentsplysirona.com](mailto:dsdigitaldentures@dentsplysirona.com)

Contents

1. Surface Repair
2. Fracture Repair
3. Tooth Repair
4. Hard Reline
5. Soft Reline

1.0 Surface Repair

CAUTION:

- Use proper ventilation.
- Wear protective gloves, eye protection, and protective clothing.



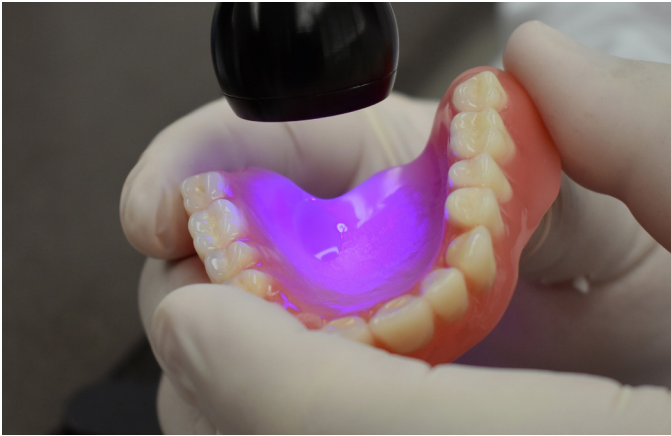
Prepare the repair area by grinding and roughening the surface with a carbide bur.



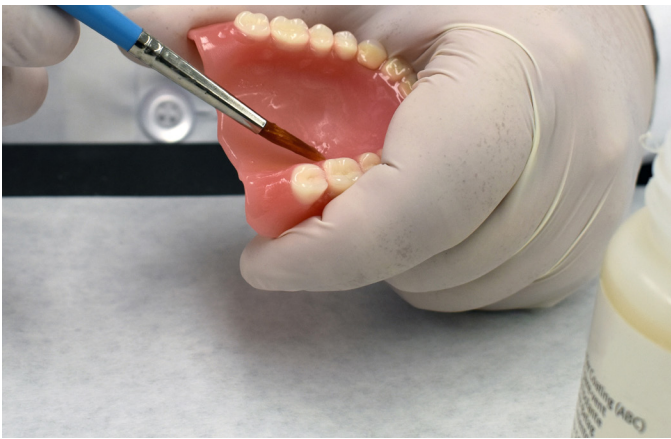
Apply Lucitone Digital Fuse™ Step 1 - 3D Tooth Conditioning Agent to the repair area and air dry for **1 minute**.



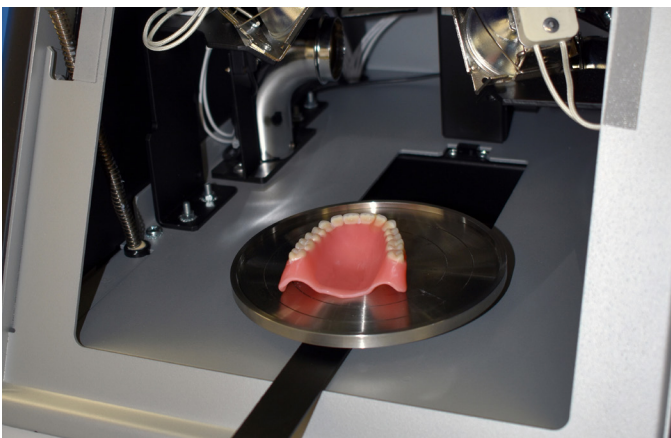
Apply Lucitone Digital Fuse™ Step 2 - 3D Denture Bonding Resin to the repair area with a brush. Allow the material to flow into the repair area to avoid air pockets - do not brush.



Tack cure the repair area for **10 seconds** using the UV Tack-Cure Light.



Apply Lucitone Digital Fuse™ Step 3 - 3D Sealer to the repair area.



Place the appliance **repair side up** in the inLab Speedcure® Processing Unit. Select the menu option “Lucitone Digital” and then “Repair.” The program will run for 10 minutes, followed by a 3-minute cooldown.

Finish and polish the denture using conventional techniques.

CAUTION:

- Only cure one repair denture at a time.
 - Only cure one side of the arch - repair side up.
 - Do not steam clean Lucitone Digital Print Denture appliances.
-

2.0 Fracture Repair - Lucitone Digital Fuse

Lucitone® HIPA High Impact Pour Acrylic Denture Base is an alternative repair material for Lucitone Digital Print Dentures. Refer to the Lucitone HIPA High Impact Pour Acrylic Instructions for Use “Repair Procedure” section for step-by-step instructions.

CAUTION:

- Use proper ventilation.
- Wear protective gloves, eye protection, and protective clothing.



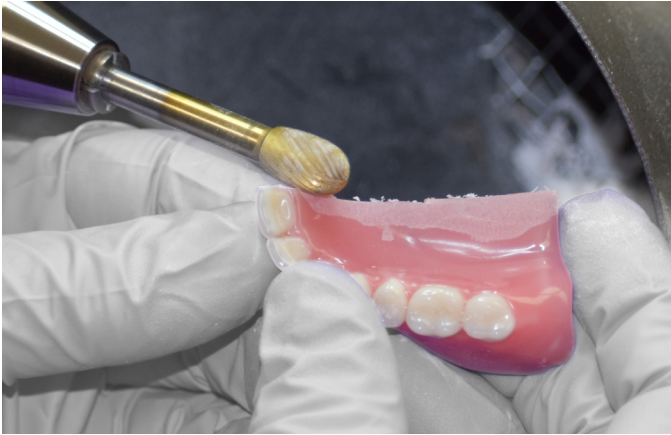
Tack the fractured denture together using an adhesive glue or sticky wax.



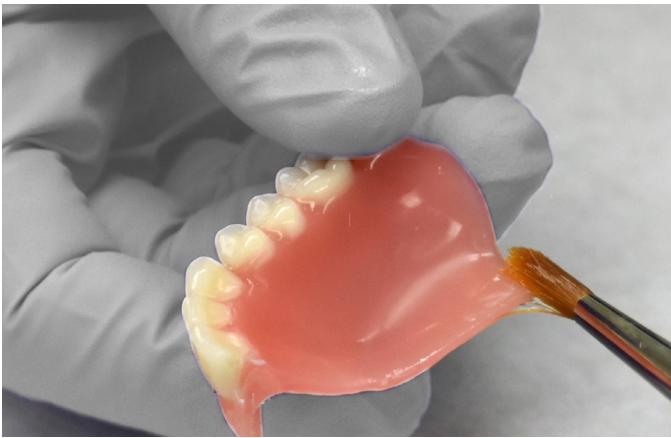
Fabricate a putty model using a silicone putty.



After the model hardens remove the denture from the model.



Prepare the repair area by grinding and roughening the surface with a carbide bur.



Apply Lucitone Digital Fuse™ Step 1 - 3D Tooth Conditioning Agent to the repair surface and air dry for **1 minute**.



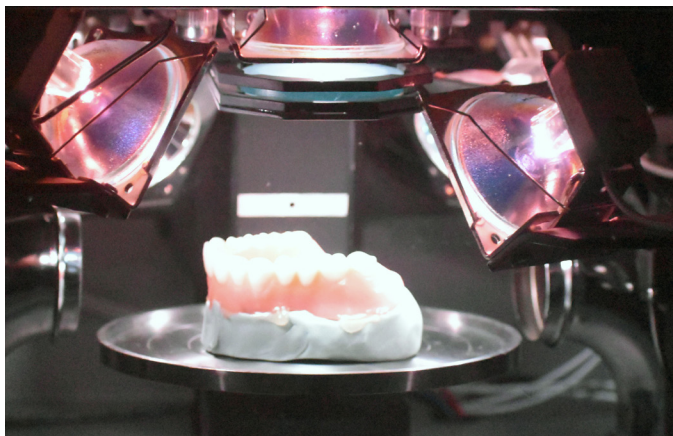
Secure the denture on the putty model with sticky wax or a similar type material.



Apply Lucitone Digital Fuse™ Step 2 - 3D Denture Bonding Resin to the repair area and tack cure for **6 - 8 seconds** using the UV Tack-Cure Light.

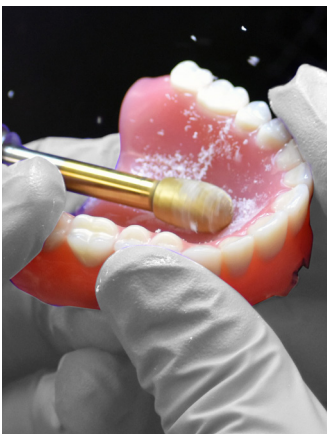


Repeat the application of Fuse Step 2 and tack curing to achieve the desired repair thickness.



Place the appliance **repair side up** in the inLab Speedcure® Processing Unit. Select the menu option “Lucitone Digital” and then “Repair.” The program will run for 10 minutes, followed by a 3-minute cooldown.

CAUTION: Position the repair surface up on the turntable and only cure one denture at a time.



Finish and polish the denture using conventional techniques.

CAUTION: Do not steam clean Lucitone Digital Print Denture appliances.

3.0 Tooth Repair - IPN 3D[®] Digital Denture Teeth

CAUTION:

- Use proper ventilation.
- Wear protective gloves, eye protection, and protective clothing.
- Keep the metal container and the foam insert free of any solid buildup. Buildup can compromise the tooth bond strength.



Prepare the repair area by grinding and roughening the surface with a carbide bur.



VWR



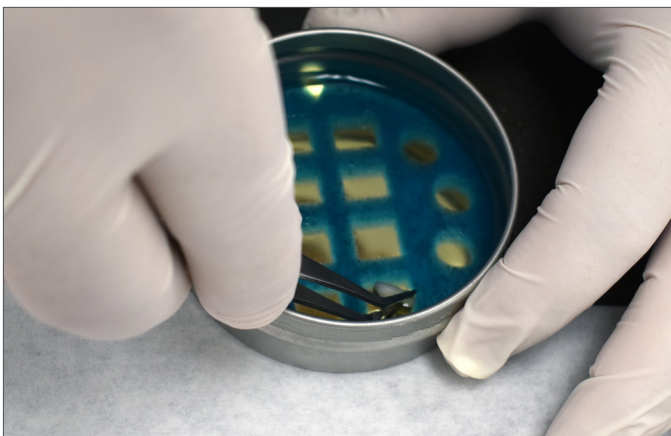
OHAUS

Use Lucitone Digital Fuse™ Step 1 - 3D Tooth Conditioning Agent to treat/condition the replacement tooth/teeth:

Plug in the hotplate and set the temperature per below. Preheat for 10 minutes.

VWR Hotplates: Temperature setting 90°C

OHAUS Hotplates: Temperature setting 60°C



Shake the bottle and pour Fuse Step 1 into the Metal Container. Place the foam insert into the Metal Container. Use Tweezers to place the tooth/teeth into the insert hole(s) - ridge lap down and complete submersion into the liquid. Place the lid on the container.



VWR



OHAUS

Place the Metal Container (inside the metal ring for VWR models only) on the hotplate until the temperature strip reaches 40°C - approximately **4-6 minutes**.

Remove the tooth/teeth from the Metal Container using Tweezers. Air dry for **2 minutes**. Do not wipe.

CAUTION: Failure to reach 40°C or using higher warming temperatures to accelerate the process will compromise the tooth bond strength.



Apply Fuse Step 1 to the repair area using a Flocked Applicator Tip or brush and air dry for **1 minute**.



Use sticky wax to position the tooth/teeth for repair.



Apply Lucitone Digital Fuse™ Step 2 - 3D Denture Bonding Resin to the repair area with a brush. Allow the material to flow into the repair area to avoid air pockets - do not brush.

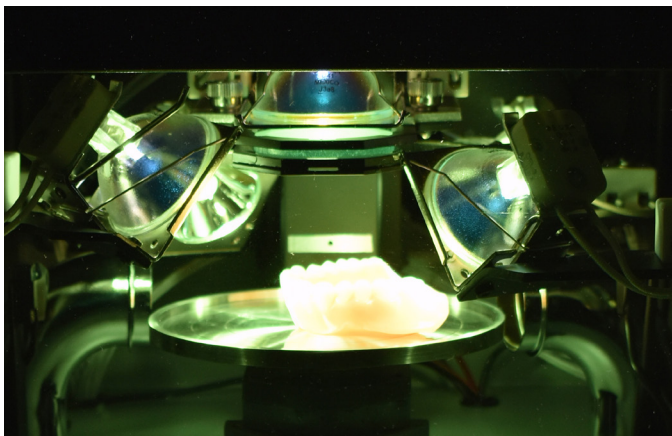
NOTE: Fuse Step 2 is available in all Lucitone Digital Print 3D Denture Base shades. Use Original shade as a universal shade option, except for with dark reddish pink.



Tack cure the repair area for **10 seconds** using the UV Tack-Cure Light.



Apply a thin layer of Lucitone Digital Fuse™ Step 3 - 3D Denture Sealer using a Flocked Applicator Tip to the repair area, including around the margins and the interproximal areas.



Place the appliance **repair side up** in the inLab Speedcure® Processing Unit. Select the menu option “Lucitone Digital” and then “Repair.” The program will run for 10 minutes, followed by a 3-minute cooldown.



Finish and polish the denture using conventional techniques.

CAUTION: Do not steam clean Lucitone Digital Print Denture appliances.

4.0 Hard Reline

- Refer to the Dentsply Sirona Lucitone® HIPA - High Impact Pour Acrylic Instructions for Use “Indirect Reline Procedure” section for step-by-step reline instructions.

CAUTION: Do not steam clean Lucitone Digital Print Denture appliances.

5.0 Soft Reline

Dentsply Sirona recommends the following soft reline materials for use with Lucitone Digital Print Dentures:

- Tokuyama SOFRELINER TOUGH® Soft and SOFRELINER TOUGH® Medium¹
- GC Corporation GC RELINE™ II Soft, RELINE™ II Extra Soft, and GC RELINE™ II Extra Extra Soft²

CAUTION: Do not steam clean Lucitone Digital Print Denture appliances.

Dentsply Sirona | 800-243-1942 | dentsplysirona.com
DP-0000502 Rev. 4 (02/2022)

¹SOFRELINER TOUGH® Soft and SOFRELINER TOUGH® Medium are registered trademarks of Tokuyama Corporation.
²GC RELINE™ II Soft, RELINE™ II Extra Soft and GC RELINE™ II Extra Extra Soft are trademarks of GC Corporation.

THE DENTAL
SOLUTIONS
COMPANY™

